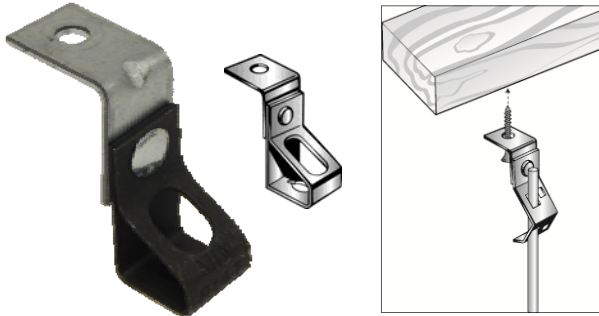


Angle Bracket Rod/Wire Hangers

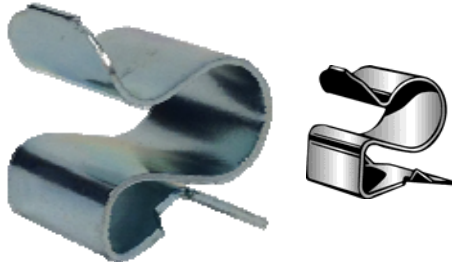


- ▶ Suspends #8 wire 1/4" and 3/8" threaded rod from overhead mountings with a clearance hole for 1/4" bolt
- ▶ Hangers made from high-carbon steel, zinc phosphate & oil finish. Angle bracket made from pre-galvanized steel

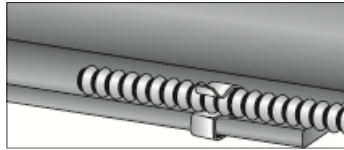
Static Load Limit: 160 lbs

Cat. No.	For Use With	Box Qty
18260	1/4" Threaded Rod with Thread Impression	100
18261	3/8" Threaded Rod Thread Impression	100

Flexible Conduit/Cable Clips



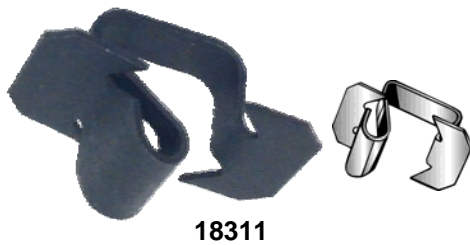
- ▶ Supports flexible conduit and all types of cable from flanges
- ▶ Made from high-carbon steel zinc plated



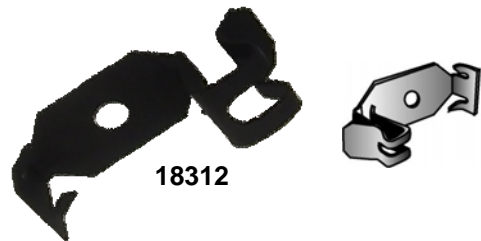
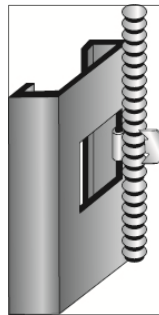
Dimensions = Inches

Cat. No.	AC/MC Cable O.D.	Flange Size	Box Qty
18291	.312 -.375	1/16"-3/16"	100
18292	.375 -.437	1/16"-3/16"	100
18293	.468 -.562	1/16"-3/16"	100
18294	.562 -.718	1/16"-3/16"	100
18301	.562 -.718	3/16"-9/32"	100

Flexible Conduit/Cable Fasteners



- ▶ Push Clip attaches BX, MC, or AC cable to open end of metal studs



- ▶ Secures MC or BX to most metal studs
- ▶ Installed using a hammer only to 2" side of Stud

Cat. No.	Description	Box Qty
18311	MC, AC or BX to Metal Stud	100

Cat. No.	Description	Box Qty
18312	MC or BX (12-2 thru 10-3) to Metal Studs	100

Spring Steel Conduit Clip



- ▶ Attach 1/2" or 3/4" Conduits
 - ▶ Keyhole for Screw
- Static Load Limit: Vertical: 100lbs
Horizontal: 25lbs**

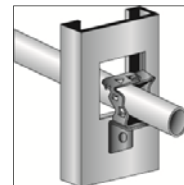


Cat. No.	Fits Conduit	Box Qty
18024	1/2", 3/4"	100

Conduit/Cable Support



- ▶ Push Clip attaches 1/2" or 3/4" Conduit to metal studs
- ▶ 1/4" Bracket Mounting Hole



Cat. No.	Fits Conduit	Box Qty
18340	1/2", 3/4"	100