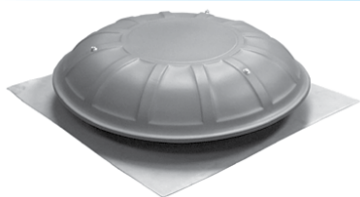


# Attic Fans

## Power Attic Mount Dome Ventilator



### Features

- 120V Motor / 1-Phase
- Safety fire link protected
- Automatic thermostat (90°-130°F)
- Insect and bird screen installed
- Powder coated metal dome and base

Note: Product may differ in appearance from image.

### Standard Models

UPC#	MODEL	DOMES COLOR	SPEED	CFM .03 SP	VOLTS	HP	RPM	ATTIC SIZE / SQ. FT.	WT LBS	LIST
686334										
866422	PDV-305-1MB-Gy	Gray	1	1080	120	1/12	1050	average/1600	18	139
866439	PDV-305-1MB-Br	Brown	1	1080	120	1/12	1050	average/1600	18	
866446	PDV-305-1MB-Blk	Black	1	1080	120	1/12	1050	average/1600	18	

## Gable Exhaust Fan



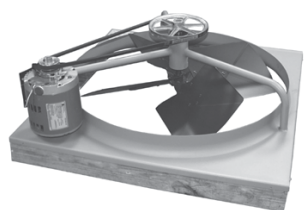
### Features

- 120V motor / 1-Phase
- Safety fire link protected
- Automatic adjustable thermostat
- Partially assembled (mounting tabs must be assembled)
- 15" diameter x 6" depth
- 4 mounting tabs on 16" centers

### Standard Models

UPC#	MODEL	DESCRIPTION	CFM .03 SP	ATTIC SIZE/ ST. FT.	SHIPPING WT. (LBS)	LIST
686334						
866378	GV-405-2B	Gable Mount Ventilator	1300	average/2000	11	108
866521	AGD-1416B	Alum Damper for GV-405-2	----	----	3	66

## Belt Drive Wholehouse Fans



### Features

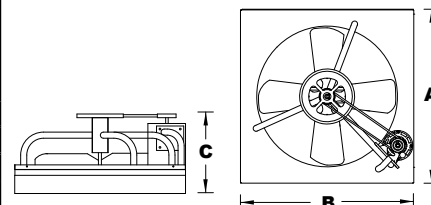
- 2-Speed motors
- Shutters automatically open when fan is turned on and close tightly when fan is turned off
- 120V, 1-Phase

**NOTE: Belt Drive Fan with "No Joist Cut" Shutter.**

### Standard Models

### Fan Dimensions

UPC#	MODEL	SIZE	SPEED	MOTOR HP	CFM @ .1 IN. H2O PRESSURE DROP w/ SHUTTER	FAN SPEED RPM	FAN MOUNTING DIMENSIONS (IN)			EXHAUST SQ. FT. REQ'D	AMPS	WT. (LBS)	LIST
							A	B	C				
793629	BD24-2-WHS	24"	2	1/3	4500/2700	612/410	28	29.5	14.5	7	5.7/4.8	40	694
793636	BD30-2-WHS	30"	2	1/3	7600/5800	520/350	34	35.5	14.5	9	6.9/5.5	50	745
793643	BD36-2-WHS	36"	2	1/3	9675/6400	395/265	40	41.5	14.5	12	6.3/3.1	64	820



### Ceiling Shutters

### Control Options

UPC#	MODEL	FIT HOLE SIZE (I.D.)	OUTSIDE SIZE (O.D.)	FAN SIZE	SHIPPING WT. (LBS)	LIST
686334						
794480	CS-10-W	26X26	28X28	24"	8	133
794466	CS-13-W	32X34	34X36	30"	10	139
794534	CS-14-W	34X34	36X36	30"	10	145
794473	CS-18-W	32X43	34X45	36"	11	159
794527	CS-19-W	34X43	36X45	36"	11	171

UPC#	MODEL	DESCRIPTION	WGHT. LBS.	LIST
686334				
792707	2-SW	2 Speed wall switch & plate	1	37
500081	1A22-7	SP Close on rise (Attic Thermostat) (90°-130°F)	1	44
500036	1A22-8	SP Close on rise (Ivory Whole House Thermostat) (50°-90°F)	1.5	44
500005	1A22-8W	SP Close on rise (White Whole House Thermostat) (50°-90°F)	1.5	44

**"Joist out style" (For replacement only)**