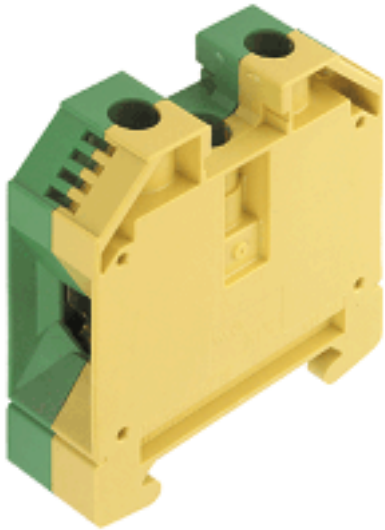


**W-Series**  
**WPE 35****Weidmüller Interface GmbH & Co. KG**  
Klingenbergstraße 16  
D-32758 Detmold  
Germany  
Fon: +49 5231 14-0  
Fax: +49 5231 14-292083  
www.weidmueller.com

The PE terminals are available in two designs: standard and compact (N), with rated cross-section from 1.5 mm<sup>2</sup> to 150 mm<sup>2</sup> (e.g. 2.5 mm<sup>2</sup> – WPE 2.5 or 4 mm<sup>2</sup> – WPE 4N).

**General ordering data**

Order No.	<a href="#">1010500000</a>
Type	WPE 35
Version	W-Series, PE terminal, Rated cross-section: 35 mm <sup>2</sup> , Screw connection, Direct mounting
GTIN (EAN)	4008190112806
Qty.	25 pc(s).

**W-Series**  
**WPE 35**

**Weidmüller Interface GmbH & Co. KG**  
 Klingenbergstraße 16  
 D-32758 Detmold  
 Germany  
 Fon: +49 5231 14-0  
 Fax: +49 5231 14-292083  
 www.weidmueller.com

**Technical data**
**Dimensions and weights**

Length	56 mm	Width	16 mm
Height	62.5 mm	Height of lowest version	63 mm
Weight	82.84 g	Net weight	82 g

**Temperatures**

Operating temperature		Storage temperature	
Continuous operating temp., min.	-50 °C	Continuous operating temp., max.	120 °C

**Rated data IECEx/ATEX**

Certificate No. (ATEX)	KEMA98ATEX1683U	ATEX certificate	KEMA98ATEX1683U_d.pdf
ATEX certificate	KEMA98ATEX1683U_e.pdf	IEC Ex certificate	IECEXULDO5.0008U_e.pdf
Wire cross section max. (ATEX)	35 mm <sup>2</sup>	Voltage, cross-connection	CrossConnectionGuide.pdf
Operating temperature range	For operating temperature range see EC Design Test Certificate / IEC Ex-Certificate of Conformity	Marking EN 60079-7	
Marking ATEX Directive 94/9/EC	II 2 G D		Ex e II

**Additional technical data**

Explosion-tested version	Yes	Installation advice	Direct mounting
Number of similar terminals	1	Open sides	closed
Type of mounting	Screwed	Version	Screw connection, With PE connection, closed

**CSA ratings data**

Certificate No. (CSA)	200039-1352963	Wire cross section max. (CSA)	2 AWG
Wire cross section min. (CSA)	12 AWG		

**Clampable wires (rated connection)**

Type of connection	Screw connection	Stripping length	18 mm
Blade size	6.5 x 1.2 mm	Connection direction	on side
Number of connections	2	Clamping range, rated connection, min.	2.5 mm <sup>2</sup>
Clamping range, rated connection, max.	35 mm <sup>2</sup>	Clamping screw	M 6
Tightening torque, min.	5 Nm	Gauge to IEC 60947-1	B8
Wire connection cross section, solid core, max. rated connection	2.5 mm <sup>2</sup>	Wire connection cross section, solid core max. rated connection	16 mm <sup>2</sup>
Wire connection cross section, stranded, rated connection, min.	2.5 mm <sup>2</sup>	Wire connection cross section, stranded, rated connection, max.	35 mm <sup>2</sup>
Wire connection cross section, finely stranded, max.	35 mm <sup>2</sup>	Wire connection cross-section, finely stranded, min.	2.5 mm <sup>2</sup>
Wire connection cross section, finely stranded with wire-end ferrules DIN 46228/1, rated connection, min.	2.5 mm <sup>2</sup>	Wire connection cross section, finely stranded with wire-end ferrules DIN 46228/1, rated connection, max.	35 mm <sup>2</sup>
Cross-section for connected conductor, finely stranded with wire-end ferrules and plastic collars DIN 46228/4, rated connection, min.	2.5 mm <sup>2</sup>	Wire connection cross-section, finely stranded with wire-end ferrules and plastic collars DIN 46228/4, rated connection, max.	35 mm <sup>2</sup>
Wire connection cross section AWG, min.	AWG 12	Wire connection cross section AWG, max.	AWG 2

**W-Series  
WPE 35**

**Weidmüller Interface GmbH & Co. KG**  
 Klingenbergstraße 16  
 D-32758 Detmold  
 Germany  
 Fon: +49 5231 14-0  
 Fax: +49 5231 14-292083  
 www.weidmueller.com

**Technical data**
**Dimensions**

TS 35 offset	32 mm
--------------	-------

**Rated data**

Rated cross-section	35 mm <sup>2</sup>	Rated voltage to adjoining terminal	800 V
Rated impulse withstand voltage to adjacent terminal	8 kV	Standards	IEC 60947-7-2
Pollution severity	3		

**UL ratings data**

Certificate No. (UR)	E60693VOL1SEC38	Conductor size Factory wiring max. (UR)	2 AWG
Conductor size Factory wiring min. (UR)	12 AWG	Conductor size Field wiring max. (UR)	2 AWG

**Material data**

Material	Wemid	Colour	Yellow, Green
UL 94 flammability rating	V-0		

**System specifications**

Product family	W-Series	Type of connection	Screw connection
Connection direction	on side	Number of levels	1
Number of connections	2	No. of clamping points per level	2
Levels cross-connected internally	No	Mounting rail	TS 35
End cover plate required	No		

**PE rating data**

Centre screw on PE terminals	M 4	PEN function	Yes
Pollution severity	3	Rated cross-section	35 mm <sup>2</sup>
Rated short-time current	4200 A (35 mm <sup>2</sup> )	Standards	IEC 60947-7-2
Tightening torque range for fixing screw	1.2...2.4 Nm		

**Classifications**

ETIM 2.0	EC000901	ETIM 3.0	EC000901
UNSPSC	30-21-18-11	eClass 4.1	27-14-03-05
eClass 5.1	27-14-03-05	eClass 6.2	27-14-03-05
eClass 7.1	27-14-03-05		

**Product information**

Descriptive text accessories	Rail support protective insulation for installation of mounting rail "SH 2" order No. 0494920000 (QTY 10).
------------------------------	--

**Data sheet...**

**W-Series  
WPE 35**

**Weidmüller Interface GmbH & Co. KG**  
Klingenbergstraße 16  
D-32758 Detmold  
Germany  
Fon: +49 5231 14-0  
Fax: +49 5231 14-292083  
www.weidmueller.com

**Technical data**

**Approvals**

Approvals



ROHS

Conform

**Data sheet...**

**W-Series**  
**WPE 35**

**Weidmüller Interface GmbH & Co. KG**  
Klingenbergstraße 16  
D-32758 Detmold  
Germany  
Fon: +49 5231 14-0  
Fax: +49 5231 14-292083  
[www.weidmueller.com](http://www.weidmueller.com)

**Drawings**

