

## Cable, Cord and Hose Reels

### Industrial Power Cord Reels



Multi-position guide arm

Positive-latch mechanism automatically maintains desired cord length

12 AWG cord for greater current carrying capacity



**HBL45123TL20**

Durable, corrosion resistant steel construction with design yellow powder coat finish

Plug-in 5 ft. long power cord requires no electrical wiring

#### Industrial Power Cord Reels

Cord End	Cable Feet (m)	Cable Type	NEMA Style	Amps	Volts AC	Weight Lbs. (kg)	Catalog Number
Without cord ends.	50 (15.2)	16/3 SJEO	5-15R	15	125	20 (9.1)	<b>HBL50163</b>
Without cord ends.	45 (13.7)	12/3 SJEO	5-15R	15	125	21 (9.5)	<b>HBL45123</b>
HBL5269C connector.	45 (13.7)	12/3 SJEO	5-15R	15	125	28 (12.7)	<b>HBL45123C</b>
HBL5369C connector.	45 (13.7)	12/3 SJEO	5-20R	20	125	28 (12.7)	<b>HBL45123C20</b>
HBL5369C connector (white reel housing).	45 (13.7)	12/3 SJEO	5-20R	20	125	28 (12.7)	<b>HBL45123C20W</b>
HBL2313 connector.	45 (13.7)	12/3 SJEO	L5-20R	20	125	28 (12.7)	<b>HBL45123TL20</b>
HBL2313 connector (white reel housing).	45 (13.7)	12/3 SJEO	L5-20R	20	125	28 (12.7)	<b>HBL45123TL20W</b>
Portable outlet box with (1) gray duplex receptacle.	45 (13.7)	12/3 SJEO	5-15R	15	125	29 (13.2)	<b>HBL45123R</b>
	45 (13.7)	12/3 SJEO	5-20R	20	125	29 (13.2)	<b>HBL45123R20</b>
Portable outlet box with (2) gray duplex receptacle.	45 (13.7)	12/3 SJEO	5-20R	20	125	29 (13.2)	<b>HBL45123R220</b>
Black portable outlet box with (1) gray duplex receptacle. (white reel housing).	45 (13.7)	12/3 SJEO	5-20R	20	125	29 (13.2)	<b>HBL45123R20WM1</b>
Portable outlet box with (1) ground fault protected gray duplex receptacle.	45 (13.7)	12/3 SJEO	5-15R	15	125	29 (13.2)	<b>HBL45123GF15</b>
	45 (13.7)	12/3 SJEO	5-20R	20	125	29 (13.2)	<b>HBL45123GF20</b>

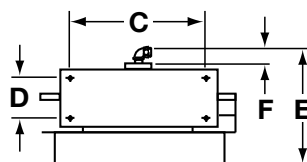
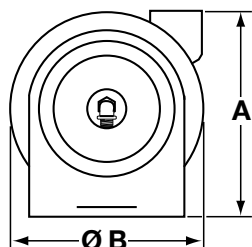
*Note: 15 Amp: Supplied with 5 ft. power supply cord with HBL5266C, 15A straight blade plug.  
20 Amp: Supplied with 5 ft. power supply cord with HBL5366C, 20A straight blade plug.  
Ground fault protected reels supplied with (1) GFM20 and (1) HBLP26FS.*

#### Accessories

Description	Weight Lbs. (kg)	Catalog Number
Pivot base 340° rotation fits all industrial models.	5 (2.3)	<b>HBL340PB</b>
Replacement stop.	.2 (.09)	<b>HBL12BS</b>

#### Dimensions

Inch (mm)	A	B	C	D	E	F
	13.00"	12.38"	8.00"	2.50"	9.75"	1.25"
	(330)	(314)	(203)	(64)	(248)	(32)



*Note: All models have four .625" (15.9) diameter mounting holes.*

#### Listing/Certification

UL 355  
CSA C22.2 No. 21.

#### Environment

Dry, indoor, non-hazardous locations.

#### Mounting Positions

Wall mount.  
Ceiling mount.  
Bench mount.



**HBL45123C**



**HBL45123TL20**



**HBL45123R**



**HBL45123R20WM1**



**HBL45123GF15**



**HBL340PB**